



manage



simplify

data sheet



## hp web jetadmin 7.0

Web-based peripheral management software

HP Web Jetadmin 7.0 is a simple peripheral management software for remotely installing, configuring, and managing a wide variety of HP and non-HP network peripherals using only a standard Web browser. It can be used to proactively solve problems before they impact user productivity. Download this free peripheral management software at [www.hp.com/go/webjetadmin](http://www.hp.com/go/webjetadmin)

### remote management

- install and manage peripherals remotely—through a standard Web browser, users can configure devices, conduct remote diagnostics, update firmware, and organize devices into groups from anywhere on their network

### extensible & scalable

- manage all your printing needs from software package—expandable functionality via optional plug-ins makes hp web jetadmin the one tool administrators can use to manage all their printing needs

### proactive management

- fix problems before they become problems—manage both hp and other standards-compliant printers while solving potential problems before they begin to impact user productivity
- receive instant e-mail notifications detailing printer issues—configure printer alerts and real-time status reports on the printers you want to monitor, what messages you want sent, and who should receive those messages

### advanced security

- protect your network settings—hp web jetadmin now supports Secure Socket Layer (SSL) and Simple Network Management Protocol (SNMP) v3.0
- NT authentication—administrator can associate each user's NT Domain account with one of the profiles on the hp web jetadmin server, simplifying administration of accounts

### simple and cost-effective

- saves time when adding new peripherals to groups—autogrouping allows administrators to have newly discovered devices automatically placed into a group based on filter criteria
- protect your investment—with the intelligent update feature, download the latest device plug-ins, language packs or application plug-ins without re-qualifying or re-installing hp web jetadmin
- intuitive task oriented user interface—allows users to navigate using a tree structured layout as well as an industry standard Web browser
- fleet management—install, configure or update firmware for all supported devices within a list or group at one time

HP printing and imaging systems help you create powerful, professional communications easily. Printers, supplies, accessories, and services are designed together to work together and invented to meet your business needs.

## technical specifications

### hp web jetadmin 7.0

#### supported application plug-ins

- driver management configuration—allows administrator to pre-configure printer software to multiple printers (physical printer settings and document defaults) before deployment
- IP address display—is designed to modify the printer control panel display to automatically show the printer's IP address
- device storage manager—manages your disk drive, flash and RAM, as well as forms and fonts stored on the printer's system
- device application manager—manages the addition, removing and listing of all available applications on the printer

#### general features

- Advanced Auto Discovery—allows administrator to schedule discoveries, and discover unconfigured devices
- Proactive Management—configurable alerts, instant e-mail notification, supplies alerts, services alerts, and consumable gauges
- Third Party Device Certification Program—allows for universal printer support using one print management software tool
- Integrated Firmware Download Manager—enables batch configuration upgrades to HP Jetdirect print servers and selected printers
- Task-oriented User Interface—tree structure navigation, configurable views, default view setting, and ability to create custom profiles
- Groups and Maps—easily organize peripherals into logical groups with virtual office maps for ease of navigation
- Integrated Web Server—runs HP Web Jetadmin without a dedicated Web server (HP Web Jetadmin runs on Microsoft® Windows NT™ 4.0, Microsoft Windows 2000 Professional, or Linux operating systems, storing information in one central database)
- Enterprise Integration—easily integrates with enterprise management solutions such as OpenView NNM, and Computer Associates UniCenter TNG using HP TopTools bridges.
- Intelligent Update—an easy way to add components including new languages, device plug-ins, and application plug-ins without reinstalling HP Web Jetadmin
- Enhanced Asset Tracking—provides the ability to schedule exportable fields such as printer capabilities and page count information
- Global Solution—localized into twenty languages to meet the needs of the global enterprise

#### supported network operating systems

- Microsoft Windows 2000 Professional, Server and Advanced Server
- Microsoft Windows XP Professional
- Windows NT 4.0 Server and Workstation with service pack 3 or later
- Red Hat Linux 7.3
- SuSE Linux v. 8.0

#### shared print queue creation support

- Microsoft Windows 2000 Professional, Server and Advanced Server
- Microsoft Windows XP Professional
- Microsoft Windows NT 4.0 Server and Workstation
- HP-UX 11.0
- Red Hat Linux 7.3
- Solaris 7 and 8
- SuSE Linux v.8.0
- Novell NetWare 5.1 & 6.0 (IPX only) using Netware Client 4.83—using HP Web Jetadmin only on a Microsoft Windows NT 4.0 or Windows 2000 or Windows XP system

#### protocol support

- IPX/SPX
- TCP/IP

#### supported browsers

- Microsoft Internet Explorer 5.5 and 6.0 (Windows only)
- Netscape 7.0 (English) all operating systems

#### network peripheral management supported printers

- All HP and non-HP printers connected through HP Jetdirect servers and standard printer
- MB-compliant third-party network connected printers

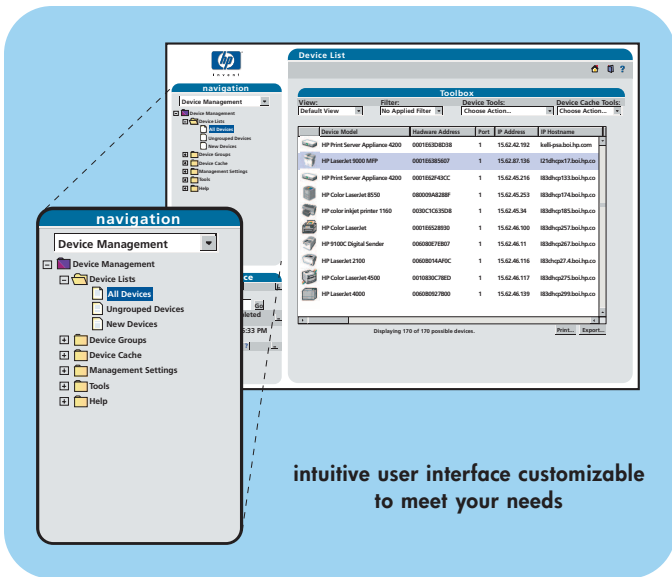
#### ordering information

number	description	free download
J6052AA	HP Web Jetadmin 7.0	<a href="http://www.hp.com/go/webjetadmin">www.hp.com/go/webjetadmin</a>

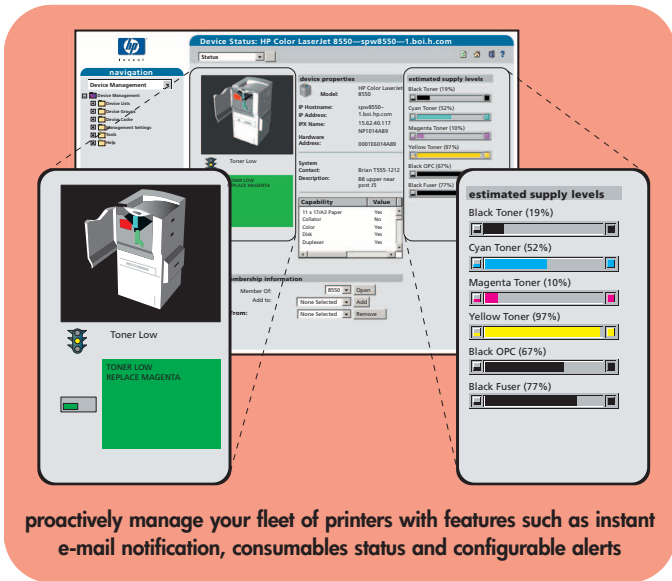
#### HP PCs use genuine Windows Operating Systems [www.microsoft.com/piracy/howtotell](http://www.microsoft.com/piracy/howtotell)

For more information on the HP Web Jetadmin 7.0, visit our Web site at [www.hp.com](http://www.hp.com) and click on products and services. Here you will find information on products, supplies, and accessories for all your computing needs. HP printers, personal computers, supplies, and accessories are available at authorized HP resellers worldwide.

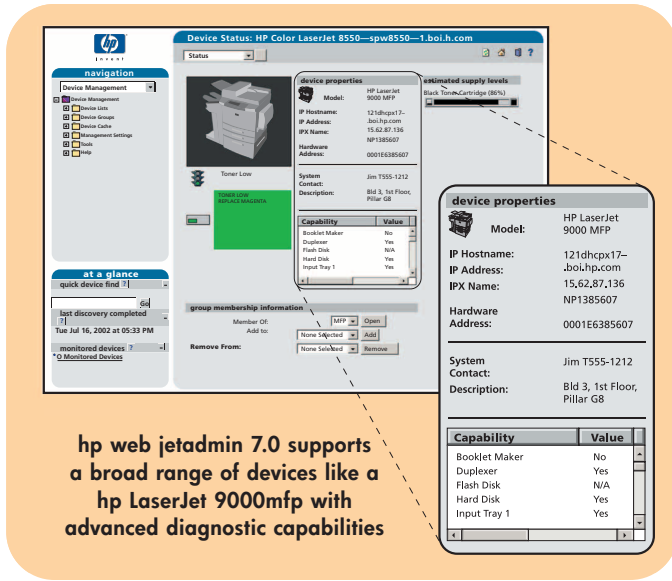
Microsoft, Windows, and Windows NT are registered trademarks of Microsoft Corporation in the USA, and other countries. Netscape is a U.S. trademark of Netscape Communications Corporation. All other brand and product names are trademarks or registered trademarks of their respective companies. The information contained in this document is subject to change without notice. HP makes no warranty of any kind with respect to this information. HP specifically disclaims the implied warranty of merchantability and fitness for a particular purpose. HP shall not be liable for any direct, indirect, incidental, consequential, or other damage alleged in connection with the furnishing or use of this information.



intuitive user interface customizable to meet your needs



proactively manage your fleet of printers with features such as instant e-mail notification, consumables status and configurable alerts



hp web jetadmin 7.0 supports a broad range of devices like a hp LaserJet 9000mfp with advanced diagnostic capabilities