

Xirrus Wi-Fi Monitor Widget for Mac OS X Guide

Version 1.01

July 3, 2008

Description

The Xirrus Wi-Fi Monitor is a free gadget utility for Mac OS X systems. Widgets are simple, mini-applications that run on the desktop and provide easy access to commonly used information and tools. The Xirrus Wi-Fi Monitor widget provides at a glance access to information about the surrounding Wi-Fi environment, plus your system's Wi-Fi adapters and connections. It provides a useful tool for anyone deploying and operating Wi-Fi.

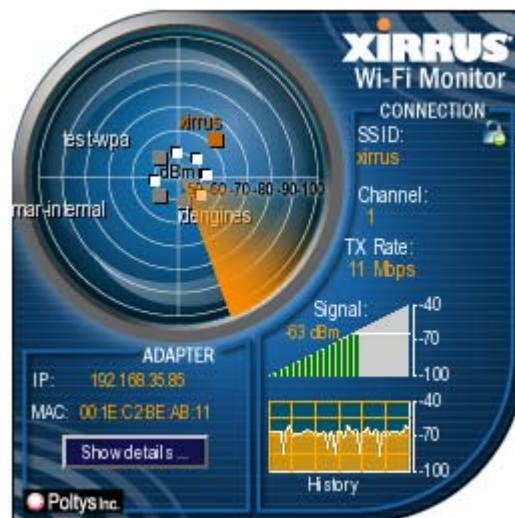
Applications

The Wi-Fi Monitor widget can be used for a number of practical applications, including:

- Search for local Wi-Fi networks
- Display laptop wireless settings
- Verify Wi-Fi coverage (simple site survey)
- Locate Wi-Fi devices
- Detect rogue APs
- Verify AP settings
- Aim Wi-Fi antennas
- Education on Wi-Fi

Features

- At-a-glance radar-like view of available Wi-Fi networks and their relative distance
- Current Wi-Fi connection signal strength with 5 minute history
- Display of Wi-Fi adapter IP and MAC addresses
- Details on available Wi-Fi networks – SSID, channel, security, type, etc.
- Summary view when on sidebar, expanded view when operating on desktop
- 9 different color skins



What's New

New in the 1.01 release (July 3, 2008):

1. 802.11n support
2. Display of Encryption and Authentication level for all Wi-Fi networks
3. Wi-Fi adapter statistics
4. Updated Glossary of Wi-Fi terminology
5. Data in flyout table is updated each time opened instead of via manual refresh

Installation

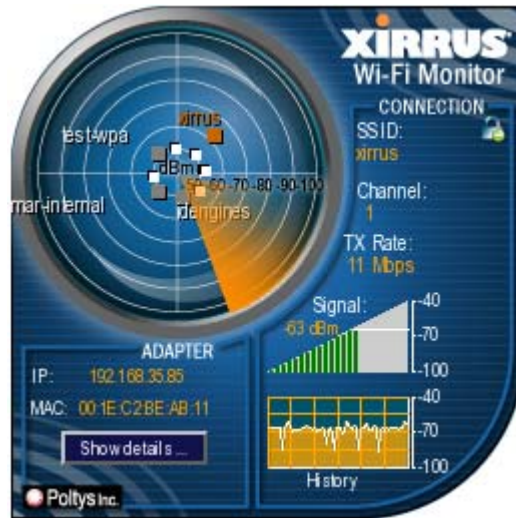
6. Install the Yahoo! Widgets framework if it is not already present on your system. The framework can be downloaded and installed from the Yahoo! Widgets site at <http://widgets.yahoo.com/download/> by clicking on "Get Started Now".
7. Download the Xirrus widget from the Wi-Fi Tools section of the Xirrus web site at <http://www.xirrus.com/library/wifitools.php>, or from the Yahoo! Widgets web site at <http://widgets.yahoo.com/> and searching for Xirrus.
8. Uninstall any previous versions of the Wi-Fi Monitor widget by right clicking on the widget graphic in the dock (the widget must be running), then selecting "Delete Widget".
9. Double click on the .widget file to install. You may need to unzip the distributed file.
10. Select "Use Widget" on the installation dialog that appears.
11. The widget will install directly into the Yahoo! Widgets dock panel on your Mac OS desktop.

Operation

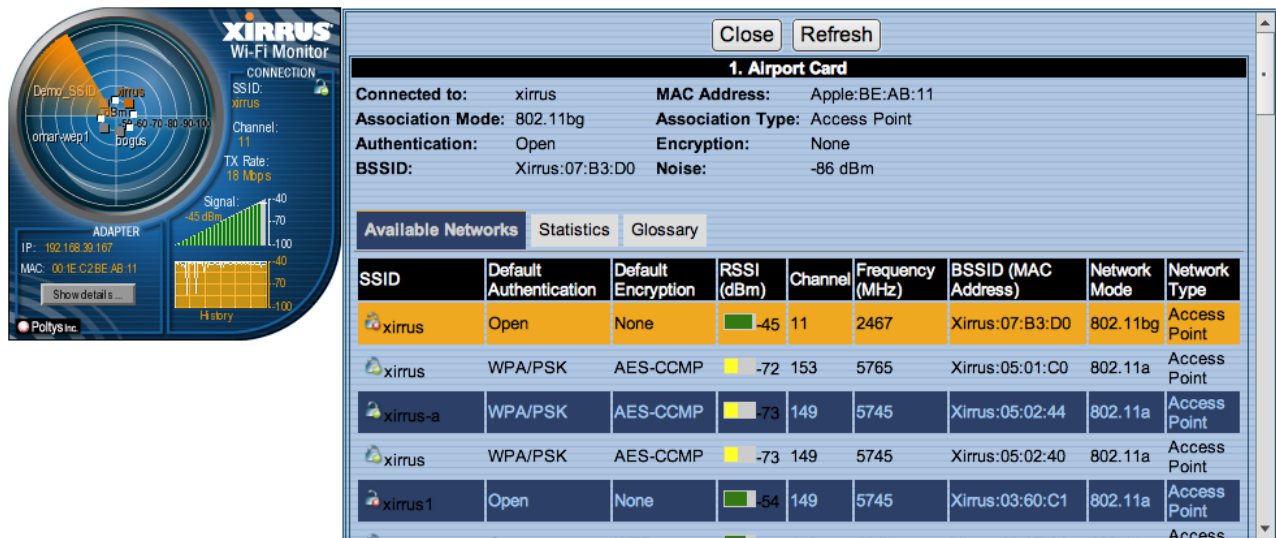
1. Dock: When on the Yahoo! Widgets dock, the widget displays the name of the currently connected Wi-Fi Network (SSID) and signal level.



2. Desktop: Single click on the widget from the dock to open the full widget. The widget face will open to its expanded view with an active radar-like display of available Wi-Fi networks, plus details about your current connection and adapter. Information on the widget face is divided into Adapter and Connection sections.



3. Fly Out: In expanded view, selecting “Show Details” opens a side flyout window. More detailed information about your adapter is displayed at top. A table of available Wi-Fi networks is listed below with the currently connected network (SSID) highlighted in orange. The Statistics tab presents information about the Wi-Fi packets flowing in and out of the system. The Glossary tab provides definitions for Wi-Fi terminology.



4. Preferences: To change widget settings, right click on the widget face when it is in expanded mode, and select “Widget Preferences”. Available settings include:
 - Display Units: Select units to display signal strength (RSSI), either % or dBm. A 0% signal corresponds to -100dBm. A 100% signal corresponds to -50dBm or greater.
 - Radar Sweep: Enable or Disable the radar sweep on the main widget face.
 - Choose Skin: Select from 9 different color skin options.



Tips

1. To reduce CPU utilization of the widget, disable the Radar Sweep under Preferences.
2. Click on the column headers on the flyout table to sort by that item, especially useful if there are a lot of networks (SSIDs) in the table.
3. Detect Ad Hoc networks (a potential security threat in Wi-Fi networks) using the Network Type column in the Available Networks table on the fly out. This column will display values of either Access Point or Ad Hoc.

Known Issues

Following are known issues with the 1.01 version of the Xirrus Wi-Fi Monitor for Mac OS:

1. The flyout window may take a long time to open – over 10 seconds. This is due to the fact calls to MacOS for Wi-Fi information can take a while to return.
2. In some cases, the widget may not correctly connect to your Wi-Fi adapter and display information upon installation. In this case, try uninstalling/reinstalling the widget. Alternatively, try disabling/enabling your Wi-Fi adapter, then reinstalling the widget.
3. The widget will not run properly with virtualization software such as VMware or Parallels.

Updates

The Xirrus Wi-Fi Monitor widget may be updated periodically with new features and fixes.

The latest widget versions are posted for free download from:

1. Xirrus website, Wi-Fi Tools page: <http://www.xirrus.com/library/wifitools.php>
2. Yahoo! Widgets site: <http://widgets.yahoo.com/> and search for “Xirrus”

Support/Feedback

The Wi-Fi Monitor widget is a free tool and does not come with a guarantee of support.

However, inquiries and feedback can be made by sending an email to widget@xirrus.com.

Also Available

The Xirrus Wi-Fi Monitor is also available as a widget for Windows Vista and Windows XP. A Linux desklet version is also in development. Check back on the Xirrus web site for updates and new operating system versions: <http://www.xirrus.com/library/wifitools.php>